



OPTIMISE YOUR WORKSPACE WITH DATA INSIGHTS

Real-time data for property & facilities managers

UNNEC **UP**
UNNEC **UP**

IS YOUR WORKPLACE GIVING THE BEST USER EXPERIENCE?

Connect and act on real time data to optimise space utilisation and management.

Are your offices cramped or not being used effectively? Do you know your daily office occupancy levels? Do you provide an office working experience that encourages higher office visits?

If you weren't asking these questions before the pandemic, you certainly are now. The pandemic has, of course, expedited hybrid working and changed working behaviours forever, but commercial property owners, developers and tenants need to be able to track workplace performance and understand space requirements correctly in order to make effective business decisions.

Specifically designed in-house, Onnec dQ has a 10-year track record in meeting these challenges and is suitable for use in both traditional fixed desk and hot-desking office environments and can provide information on virtual, remote and home based users.

The result is a unique desk utilisation and space analysis solution which helps you to optimise use of existing work areas, floors or buildings. Plan future estate requirements, analyse work patterns or analyse desk utilisation for optimised usage and accurate cost allocation.

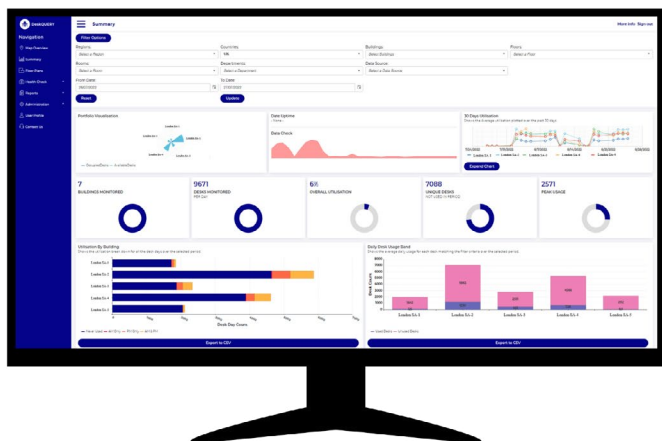
HOW DOES IT WORK?

Onnec dQ is a seamless and modular solution that is tailored to meet the requirements of the space it is monitoring by using IP tracking and a suite of sensor solutions.

Onnec dQ then communicates this information through easy-to-interpret graphical interfaces and bespoke reports.

This unique approach gives accurate monitoring and analysis of real-time campus usage by identifying:

- Details of all IP devices on your network, whether connected directly, wirelessly or connected from outside the building.
- How long they are connected to the network and whether they are active or on standby.



The result – a constantly evolving visualisation of real-time usage, overlaid on physical floorplans, with instant access to the data with daily, weekly or monthly averages by user, department, floor, building or estate.

VISIBILITY OF YOUR INFORMATION TO MANAGE SPACE MORE EFFECTIVELY



REAL-TIME UTILISATION

Real-time desk and meeting room utilisation monitoring that can measure utilisation by desk, by user and by department.



MULTIPLE SAVINGS

Savings can be achieved across multiple business streams including real estate, security and IT, thereby increasing ROI.



MULTI-PURPOSE

Suitable for use in both traditional fixed desk and hot-desking office environments, as well as the ability to provide information on virtual, remote and home-based users.



QUICK DEPLOYMENT

Quick deployment with installation and roll out typically completed in under two weeks.



DISCREET SENSOR ADD-ON

Sensor technology included for areas such as meeting rooms where PC's are not prevalent.



HIGH DETAIL & ACCURACY

Produces significant advances in detail and accuracy through existing solutions (surveys, desk sensors) enabling informed decision making across estates.



ROOM BOOKING SYNCING

Connect CAFM and booking room technology through API's.



10 YEAR TRACK RECORD

Learning with our customers to deliver bespoke and modular solutions.

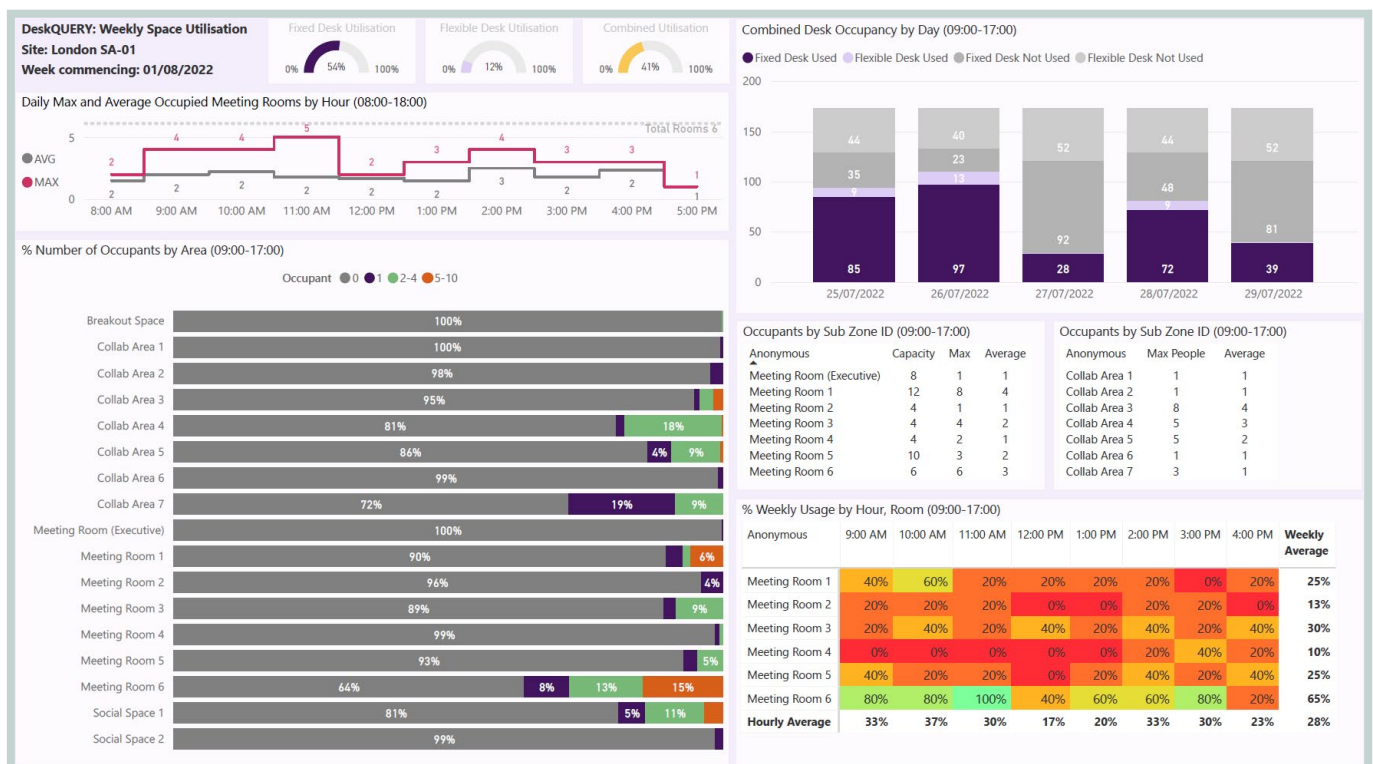
REPORTING AND DASHBOARDS

In addition to measuring space and desk utilisation, Onnec dQ has several in-built attributes that help provide a full end-to-end space management toolset.

Onnec dQ utilises a graphical interface which includes a web-based space management and a moves-planning toolset that allows organisations to graphically plan and manage their space portfolio through a user-friendly interface. The Graphical Interface is highly configurable and scalable and the visualised information helps organisations understand usage of building and enable property savings.

- ✓ Works in conjunction with AutoCAD to create and manage floor plans
- ✓ Publish interactive floor plans through a web interface
- ✓ Allow distributed users to view floor plans without the need of specialised viewing tools
- ✓ Allocate cost and cost distribution to space
- ✓ Manage occupancy information such as department allocation and staff locations
- ✓ Allocate and report on space types and categories, and on space vacancies and ownership

Furthermore bespoke reports offer a granular 1-page dashboard on desk usage by hour, peak utilisation, average as well as maximum occupancy by area.



SUCCESSFUL DELIVERY CASE STUDY 1

A global financial services company needed to optimise space efficiently across several buildings following an extensive restructure of its London campus.

Onnec dQ was used extensively to help develop a campus strategy that met the needs of the new business model and to optimise space allocation and desk usage.

The overlay of space utilisation data onto heat map floor plans and identifying current and planned allocations graphically made the complex process seamless and organised.

The result? With the remodelled campus, 3 London buildings were exited and around 10,000 desk moves implemented to achieve the new strategy requirements. With desks costing as much as £15K per year, savings were in the region of £150 million.



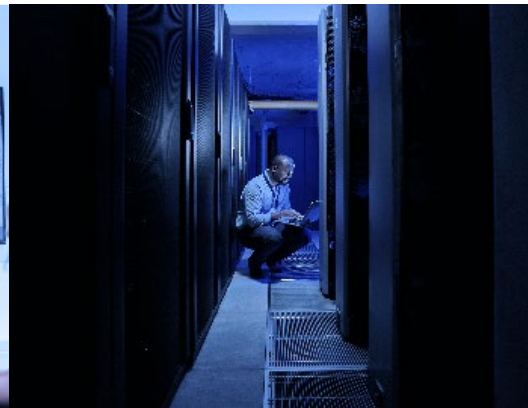
SUCCESSFUL DELIVERY CASE STUDY 2

A global insurance company wanted to perform a post-occupancy evaluation for a workspace refurbishment project across multiple buildings. They needed visualisation of workspace usage and trends in the new work arrangements.

Onnec dQ was used to collect data from both sensors and devices, providing meaningful insights. Granular information of occupancy by hour and maximum usage across the week were used to restructure rooms and identify work patterns of teams.

The result? The insights provided by Onnec dQ were used to make improvements to the floor layout, resulting a space that supports productive work and collaboration. Furthermore, Onnec dQ is in position to quickly highlight any changes in usage utilisation.





ABOUT ONNEC

Onnec is a global IT infrastructure specialist providing end-to-end connectivity solutions for datacentre, office, fulfilment centre and retail environments.

From structured cabling, networking solutions and connected devices to managed services and building insights, our end-to-end services give you the infrastructure you can completely rely on.

Onnec is one of the world's leading exponents in this space and, with over 800 full-time employees across EMEA, US and APAC, the company is structured around key global customers to ensure consistency of service and delivery. As such, the company has a loyal customer base of multinationals, with many relationships spanning more than 30 years. Customers benefit from decades of experience and industry-leading standards – deployed at a local level.

Onnec is at the centre of connections, and strong connections is at the heart of everything Onnec does.

www.onnecgroup.com